





solarwind
Powered by Nature

SOLARWIND
Baku, Azerbaijan, Shemakha highway 18 km
Tel: (+99412) 3425500
Mob: (+99477) 5204147
Whatsapp / Wechat
<https://www.facebook.com/solarwindglobal>
https://www.instagram.com/solarwind_company
info@solarwind.az, www.solarwind.az

YouTube	Telegram	WeChat	WhatsApp	Facebook	www	Instagram
						



SOLAR
PV MOUNTING SYSTEM
SOLAR PANEL BRACKETS



COMPANY PROFILE

Solarwind Company a professional provider of high quality photovoltaic mounting systems in Azerbaijan. Solarwind Company develops, manufactures and markets a broad range of solar panels, from small-scale solar application in residential houses to heavy-task application in large industrial facilities. Solarwind`s principal products include Roof Mounting Systems, Ground Mount System, Pole Mount System, Carport Mount System, Farmland Mount System, Fence and Accessories.

R & D TEAM

Solarwind Company insists on “professional and innovation” on products research and development, provides effective guarantee to customers with “Professional”, and create more value with “Innovation”. Solarwind Company sets up internationalized Research and Development Department with an oversea educated elites as leaders, and emphasizes applying advanced technique equipment and bringing in high-grade, precision, advanced talented person, offering a series of ground mounting system, roof mounting system and so on high tech products in succession, always keep leading status on solar PV mounting structural design and system performance our design and performance taking road of.

MANAGEMENT CONCEPT

Since establishment, Solarwind Company has been persisting in the management tenet of “Customer oriented, Peace loving, Honest based, Pragmatic & Solidarity”, sticking to scientific development concept and strict quality control.

COMPANY MISSION

Quality is the life, integrity and development.

To ensure the “Top Products, Top Service”, Solarwind Company has been seeing quality as the enterprise`s entire life.

We sincerely look forward to your visit and guidance, we are expecting to cooperate with you and create mutual beautiful products.



FACTORY



ADVANCED TECHNOLOGY AND EQUIPMENT FIRST CLASS PRODUCTION LINE



PACKAGING



CONTENTS

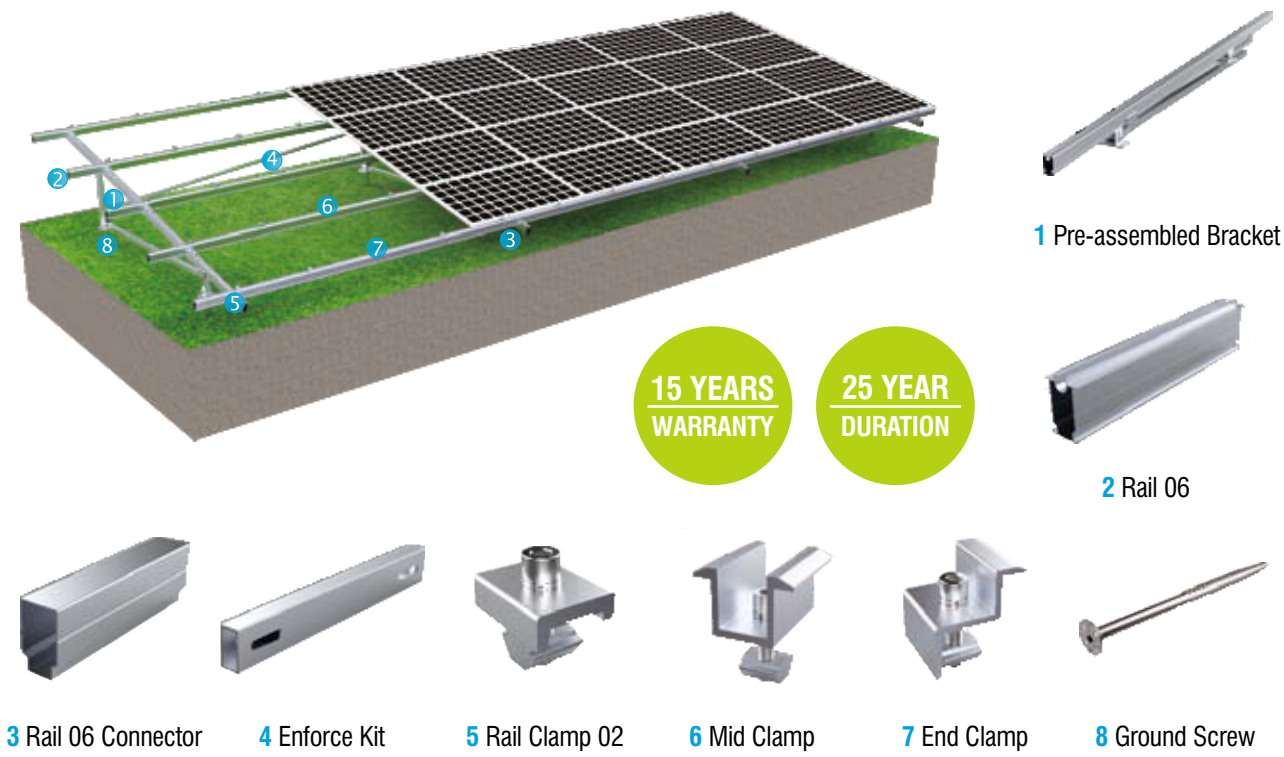


01-02	ALLUMINIUM GROUND MOUNTING SYSTEM
03-04	C-TYPE STEEL GROUND MOUNTING SYSTEM
05	LARGE C-TYPE STEEL GROUND MOUNTING SYSTEM
06	CARBON STEEL SINGLE - PILLAR MOUNTING SYSTEM
07	POLE MOUNTING SYSTEM
08	GROUND MOUNTING STRUCTURE PROJECTS
09-10	TILE ROOF MOUNTING SYSTEM
11-12	METAL SHEET ROOF MOUNTING SYSTEM
13-14	ADJUSTABLE METAL SHEET ROOF MOUNTING SYSTEM
15	ROOF MOUNTING COMPONENTS
16	FLAT ROOF TRIANGLE MOUNTING SYSTEM
17-18	FLAT ROOF TRIANGLE - BALLASTED MOUNTING SYSTEM
19-20	ROOF MOUNTING STRUCTURE PROJECTS
21-22	SOLAR CARPORT MOUNTING SYSTEM
23	CARBON STEEL CARPORT MOUNTING SYSTEM
24	CARPORT MOUNTING STRUCTURE PROJECTS
25-26	SOLAR FARMLAND MOUNTING SYSTEM
27	SOLAR FARMLAND MOUNTING STRUCTURE PROJECTS
28	PHOTOVOLTAIC PLANT FENCE
29-31	GROUND SCREW
32-33	SOLAR CLAMPS



**ENTERPRISE
HONOR
HONOR
QUALIFICATION**





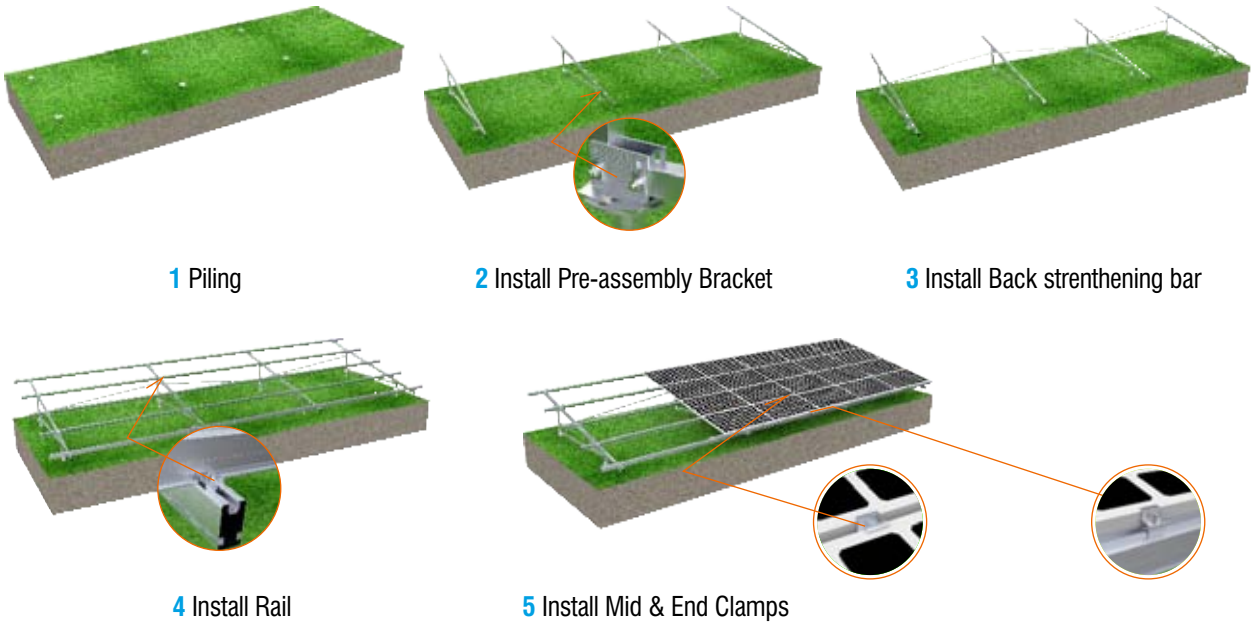
Pre-assembled Bracket



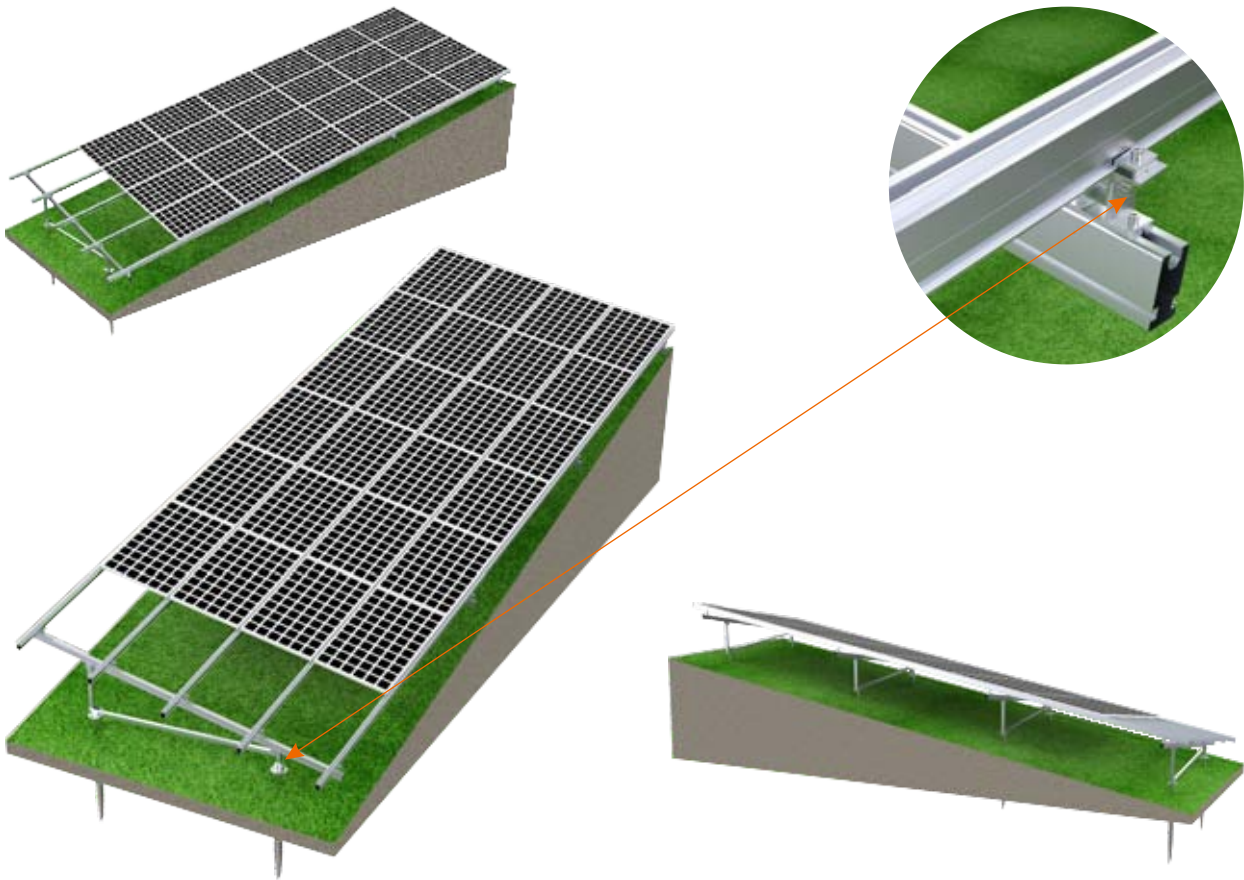
TECHNICAL INFORMATION

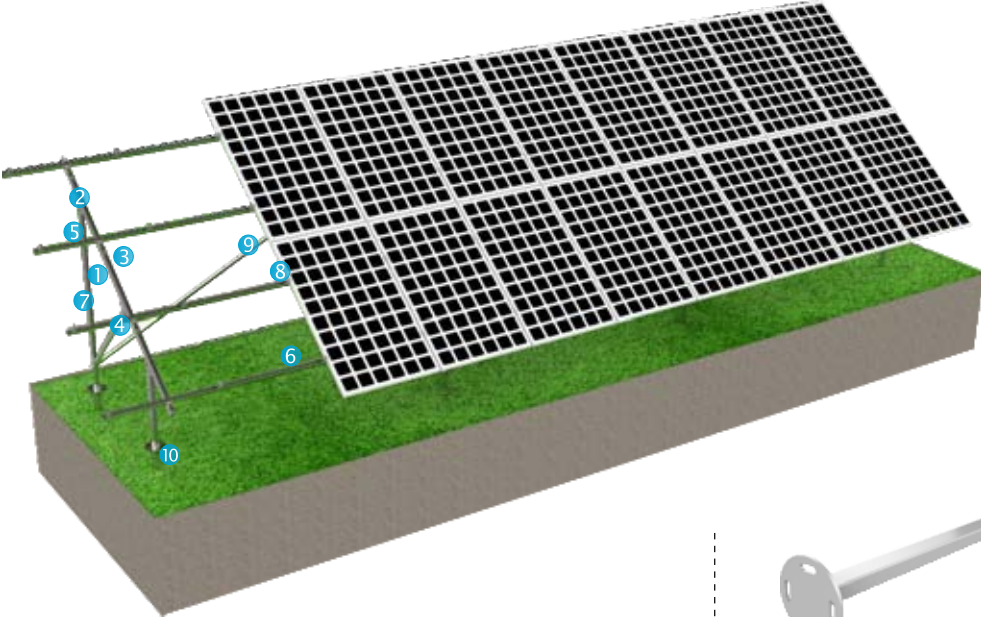
TILT ANGLE	0 - 60°
MAX WIND SPEED	60m/s
SNOW LOAD	1.4KN/m2
MATERIAL	AL6005-T5
GROUND CLEARANCE	Customized
FOUNDATION	Ground screw/Concrete
ARRAYMENT	Customized
STANDARD	Japan JIS C 8955 AS/NZS 1170

Rail Connector Installation



Tilted Stand Ground Mount





15 YEARS
WARRANTY

25 YEAR
DURATION

BENEFITS

Easy Installation:

Parts are highly pre-assembled in factory

Safety and Reliability:

Check and Test the structure strictly

Flexibility and Adjustable:

Smart design reduce the installation difficulty

TECHNICAL INFORMATION

TILT ANGLE	0 - 60°
MAX WIND SPEED	60m/s
SNOW LOAD	1.4KN/m2
MATERIAL	Hot-deep galvanized steel SUS304
GROUND CLEARANCE	Customized
FOUNDATION	Ground screw/Concrete
ARRAYMENT	Customized
STANDARD	Japan JIS C 8955 AS/NZS 1170



1 Leg Kit



2 U-Connector



3 C Steel Beam



4 Square pipe



5 C Steel Rail



6 C Steel Rail Connector



7 End Clamp 01



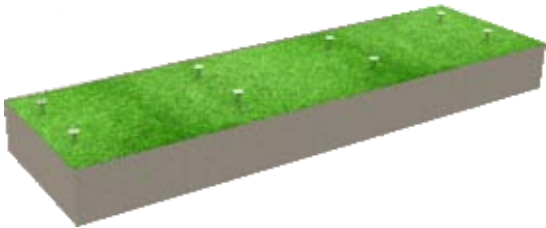
8 Mid Clamp 01



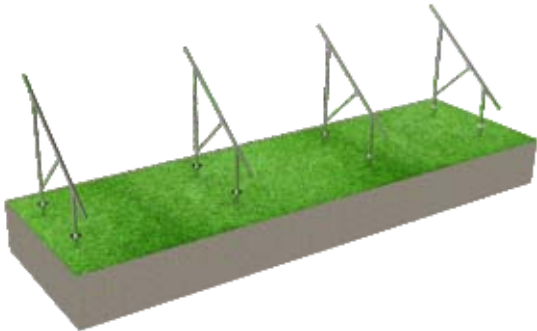
9 Inclined Support



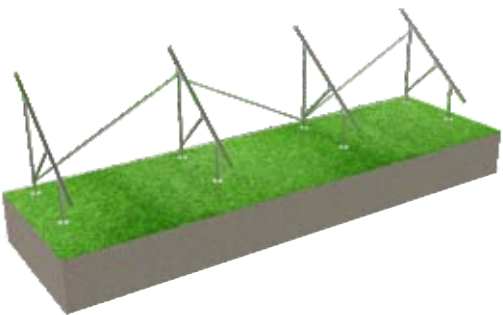
10 Ground Screw



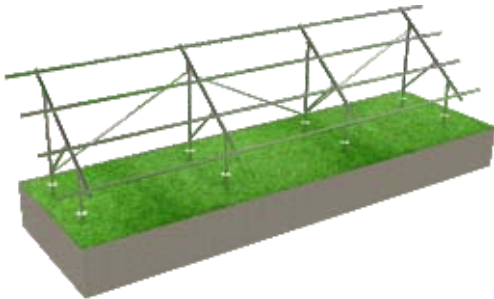
1 Piling



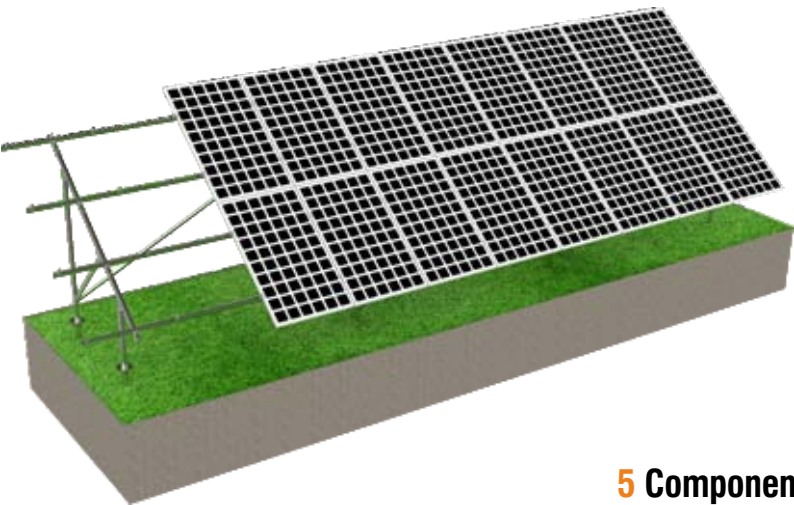
2 Leg Kit, Square Pipe and C Steel Rail Installation



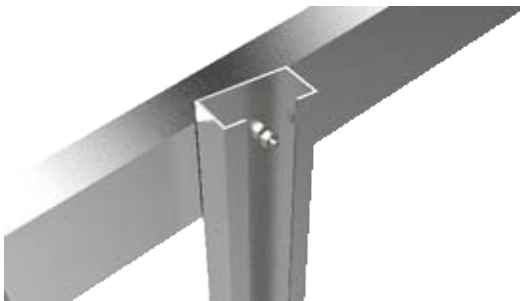
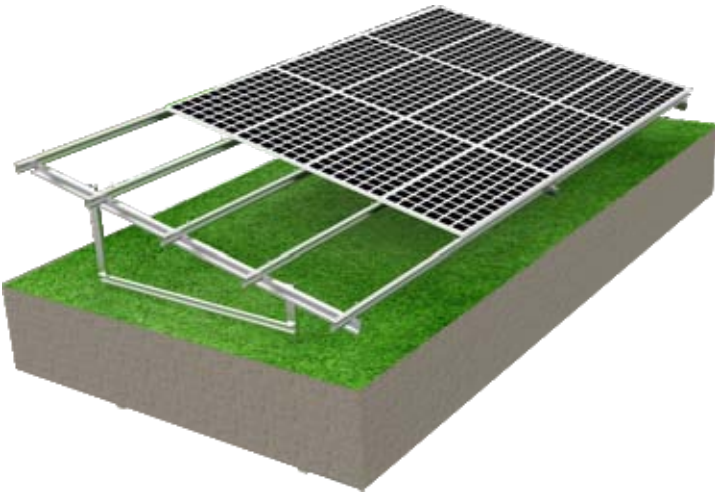
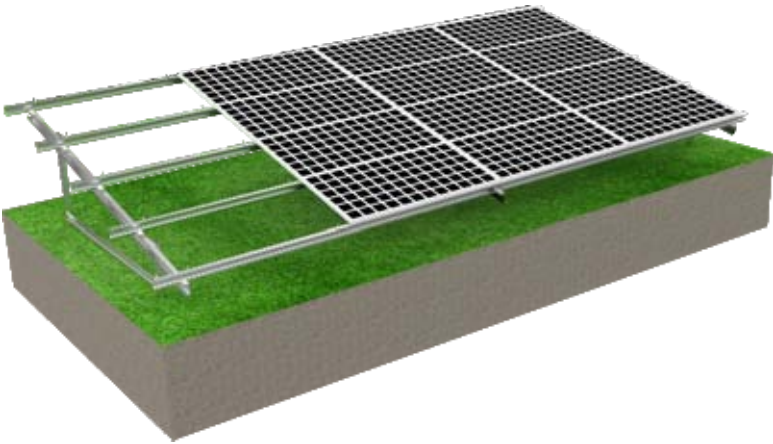
3 Inclined Support Installation



4 C Steel Rail Installation



5 Components Installation



BENEFITS
Easy Installation:
Parts are highly pre-assembled in factory

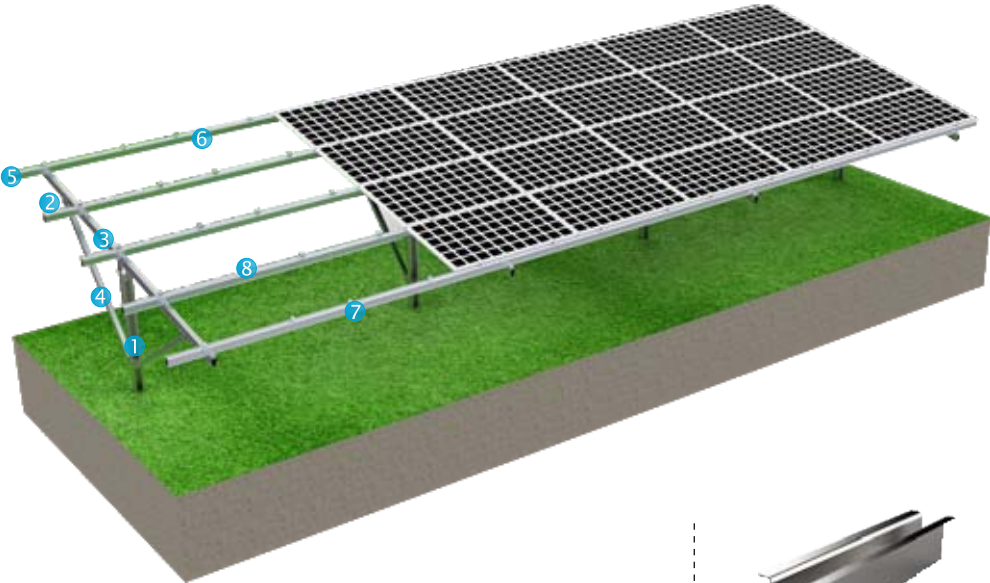
Safety and Reliability:
Check and Test the structure strictly

Flexibility and Adjustable:
Smart design reduce the installation difficulty

15 YEARS
WARRANTY

25 YEAR
DURATION

TECHNICAL INFORMATION	
TILT ANGLE	0 - 60°
MAX WIND SPEED	60m/s
SNOW LOAD	1.4KN/m2
MATERIAL	Hot-deep galvanized steel SUS304
GROUND CLEARANCE	Customized
ARRAYMENT	Customized
STANDARD	Japan JIS C 8955 AS/NZS 1170



15 YEARS
WARRANTY

25 YEAR
DURATION

BENEFITS
Easy Installation:
Parts are highly pre-assembled in factory

Safety and Reliability:
Check and Test the structure strictly

Flexibility and Adjustable:
Smart design reduce the installation difficulty

TECHNICAL INFORMATION	
TILT ANGLE	0 - 60°
MAX WIND SPEED	60m/s
SNOW LOAD	1.4KN/m2
MATERIAL	Hot-deep galvanized steel SUS304
GROUND CLEARANCE	Customized
ARRAYMENT	Customized
STANDARD	Japan JIS C 8955 AS/NZS 1170



1 Pole leg



2 H-Connector



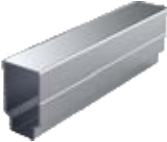
3 Beam



4 Square pipe



5 Rail 06



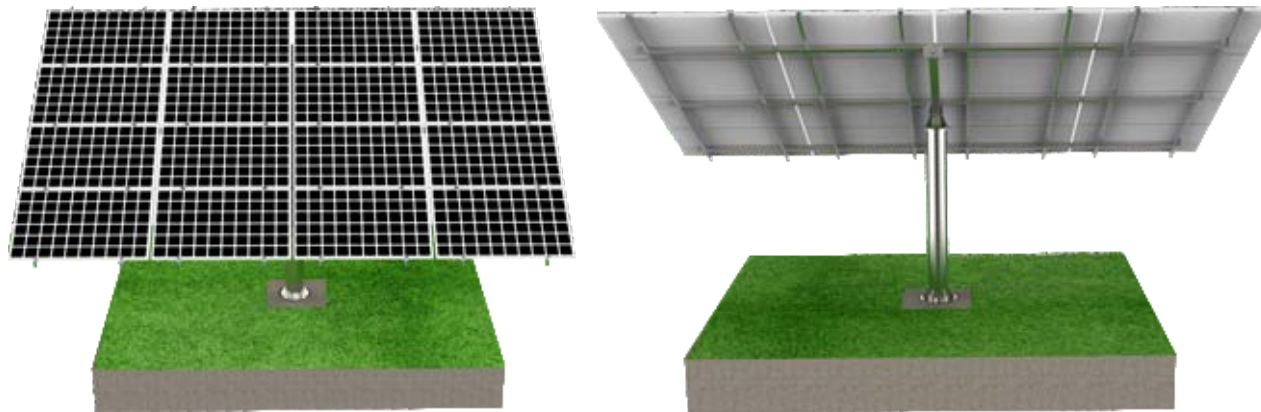
6 Rail 06 Connector



7 End Clamp 02



8 Mid Clamp 02

**BENEFITS****Easy Installation:**

Parts are highly pre-assembled in factory

Safety and Reliability:

Check and Test the structure strictly

Flexibility and Adjustable:

Smart design reduce the installation difficulty

TECHNICAL INFORMATION

TILT ANGLE	0 - 60°
MAX WIND SPEED	60m/s
SNOW LOAD	1.4KN/m2
MATERIAL	AL6005-T5 & SUS304 & Q235B
GROUND CLEARANCE	Customized
FOUNDATION	Concrete
ARRAYMENT	Customized
STANDARD	Japan JIS C 8955 AS/NZS 1170



15 YEARS
WARRANTY

25 YEAR
DURATION

TOTAL LAYOUT: 2 Mw
MATERIAL: Hot Galvanized Steel

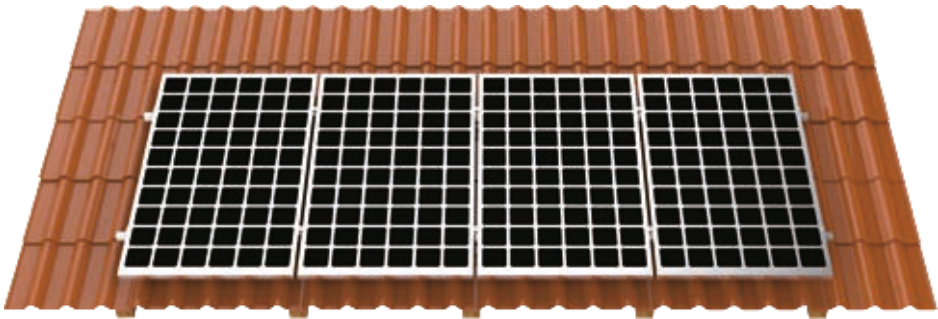


TOTAL LAYOUT: 18 Mw
MATERIAL: Hot Galvanized Steel

TOTAL LAYOUT: 2 Mw
MATERIAL: Aluminium 6005 - T5



TOTAL LAYOUT: 1.2 Mw
MATERIAL: Aluminium 6005 - T5



TECHNICAL INFORMATION

INSTALL SITE	Tile Roof Top
ROOF SLOPE	Up to 60 deg
BUILDING HEIGHT	Up to 20 m
MAX WIND SPEED	60 m/s
SNOW LOAD	1.4 KN/m2
MATERIAL	A16005-T5 & Stainless steel 304
COLOR	Natural or Customized
STANDARD	Japan JIS C 8955 AS/NZS 1170

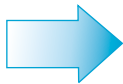
15 YEARS
WARRANTY

25 YEAR
DURATION

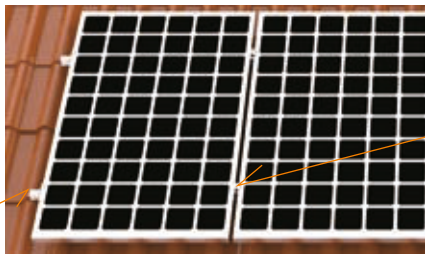
INSTALLATION



Open tile and fix the roof hook to the purlin with self-tapping screws



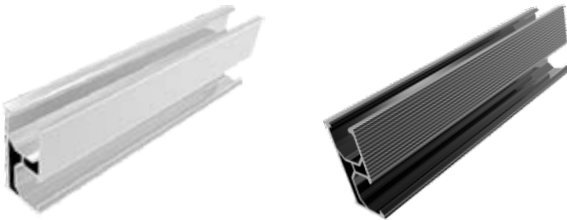
Rail Istallation



Fix End & Mid Clamps



COMPONENTS
MATERIAL: AL 6005-T5 & Stainless steel SUS304
SURFACE Clean Anodized



Rail 01

SPECIFICATION

2560 mm	3405 mm	4200 mm	Customized
---------	---------	---------	------------



Rail 01 Connector

SPECIFICATION

150 mm	200 mm
--------	--------



Mid Clamp & End Clamp

SPECIFICATION

35 mm	40 mm	45 mm	46 mm	50 mm
-------	-------	-------	-------	-------



EPR-TRH-01



EPR-TRH-02



EPR-TRH-03



EPR-TRH-04



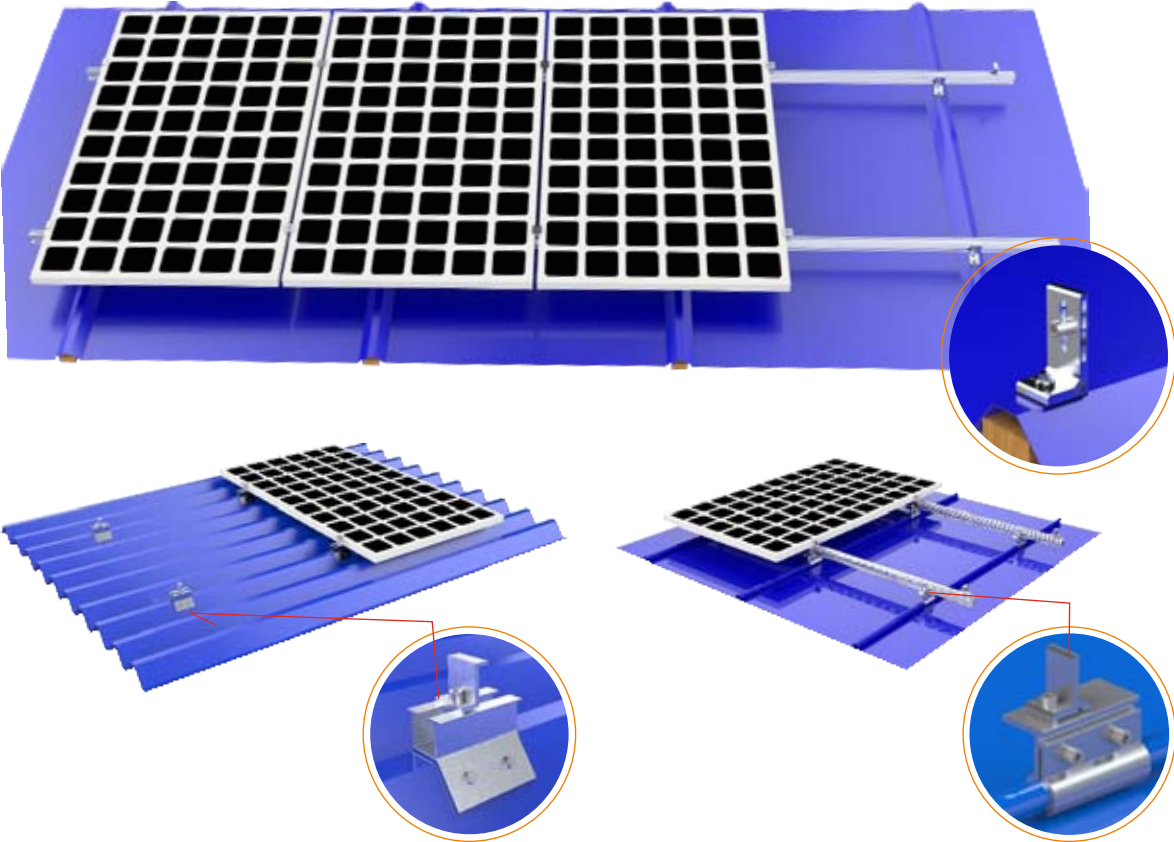
EPR-TRH-05



EPR-TRH-06

Tile Roof Hooks

MATERIAL: Stainless steel SUS304
SURFACE Sandblasted
High Pre-assembled



TECHNICAL INFORMATION

INSTALL SITE	Tile Roof Top
ROOF SLOPE	Up to 60 deg
BUILDING HEIGHT	Up to 20 m
MAX WIND SPEED	60 m/s
SNOW LOAD	1.4 KN/m2
MATERIAL	AL6005-T5 & Stainless steel 304
COLOR	Natural or Customized
STANDARD	Japan JIS C 8955 AS/NZS 1170

15 YEARS
WARRANTY

25 YEAR
DURATION

COMPONENTS
MATERIAL: AL 6005-T5 & SUS 304 & A2-70 Bolt



Rail 01 Connector



Rail 01 Connector



Mid Clamp 01



End Clamp 01



EPR-MRH-01



Material: Aluminium



EPR-MRH-02



Material: Aluminium



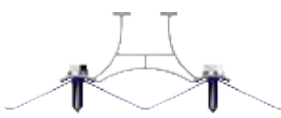
EPR-MRH-03



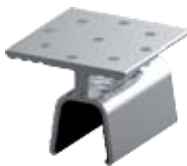
Material: Aluminium



EPR-MRH-04



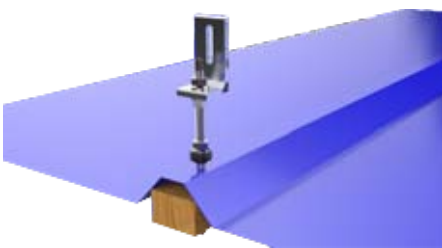
Material: Aluminium



EPR-MRH-05



Material: Aluminium



EPR-MRH-06
Material: SUS304 + AL6005T5
M10 * 200mm / M12 * 300

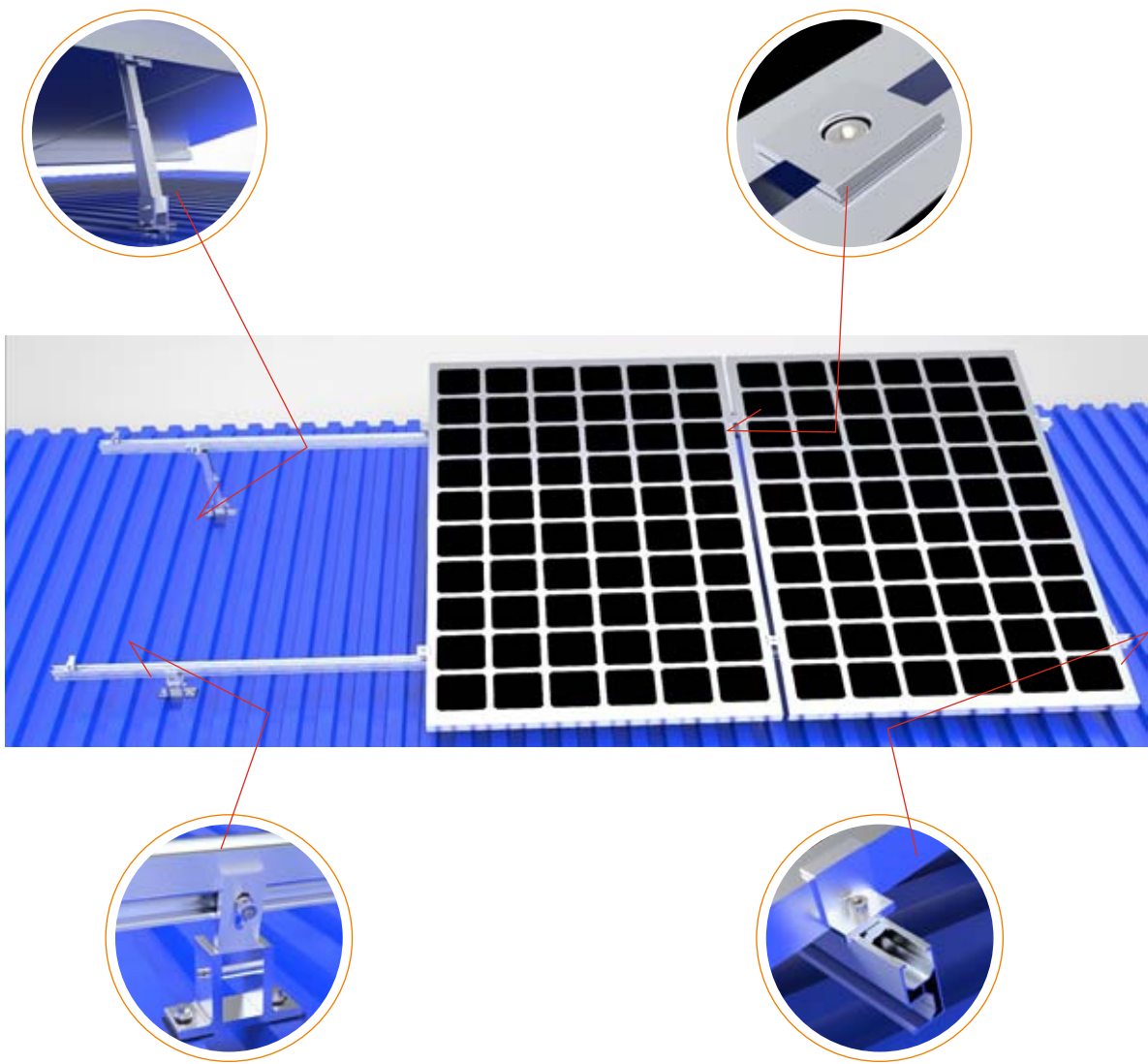


EPR-MRH-07
Material: SUS304
No need destroy purlins



EPR-MRH-06
Material: AL6005T5
40mm / 50mm





TECHNICAL INFORMATION	
INSTALL SITE	Low profile roof / Flat roof
MAX WIND SPEED	60m/s
SNOW LOAD	1.4KN/m2
TILT ANGLE	10 - 60
BUILDING HEIGHT	20 m
MATERIAL	AL6005-T5 & SUS 304
STANDARD	Japan JIS C 8955 AS/NZS 1170

15 YEARS
WARRANTY

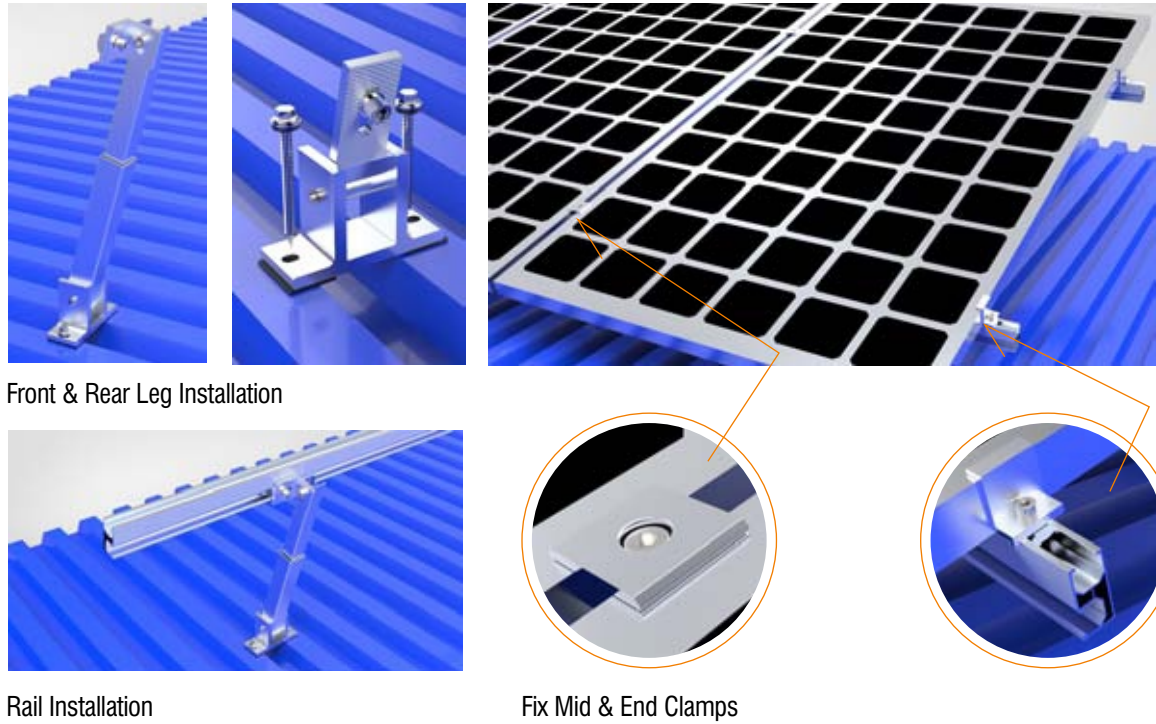
25 YEAR
DURATION

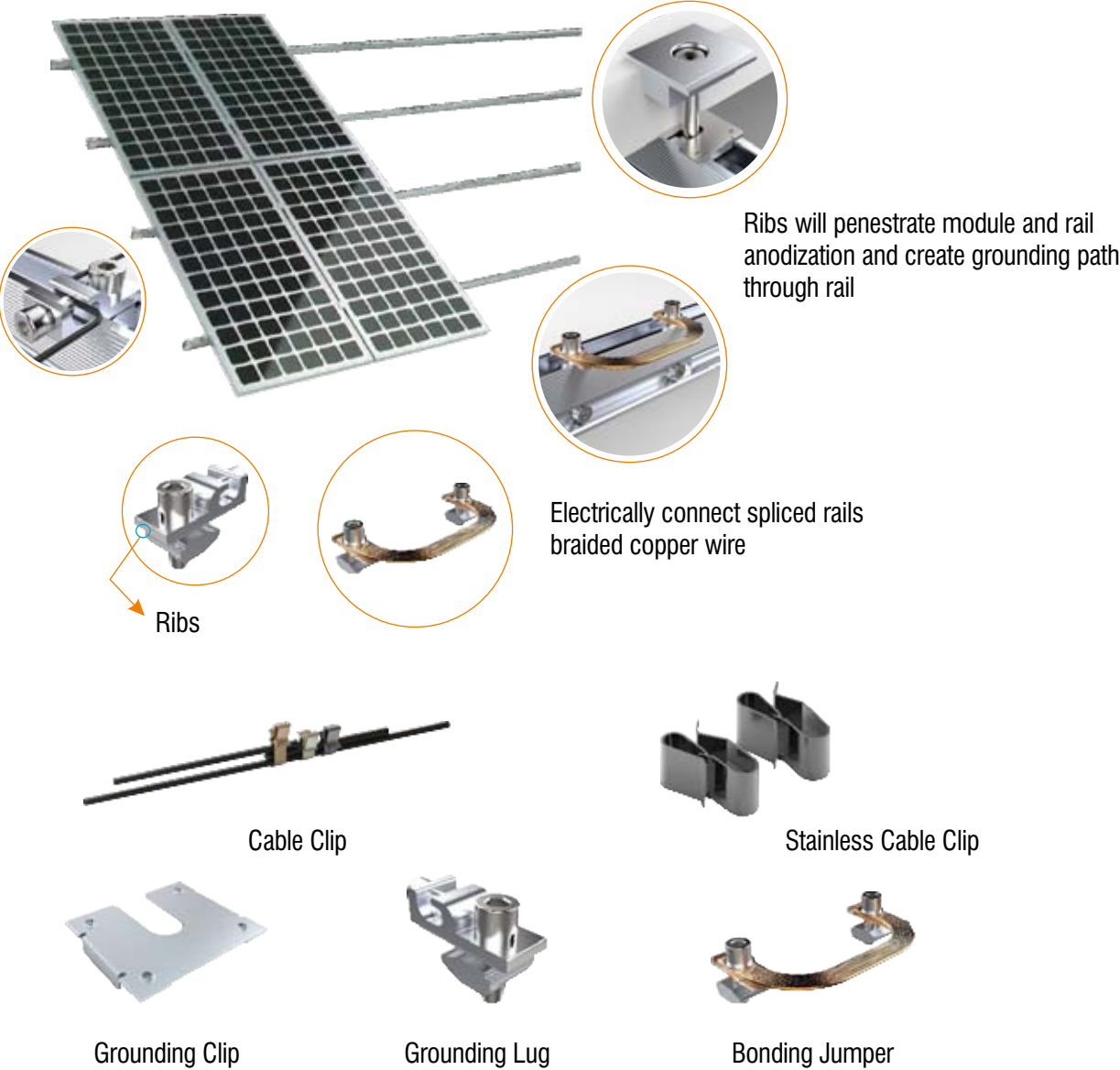
COMPONENTS

MATERIAL: AL 6005-T5 & Stainless steel SUS304
 SURFACE Clean Anodized

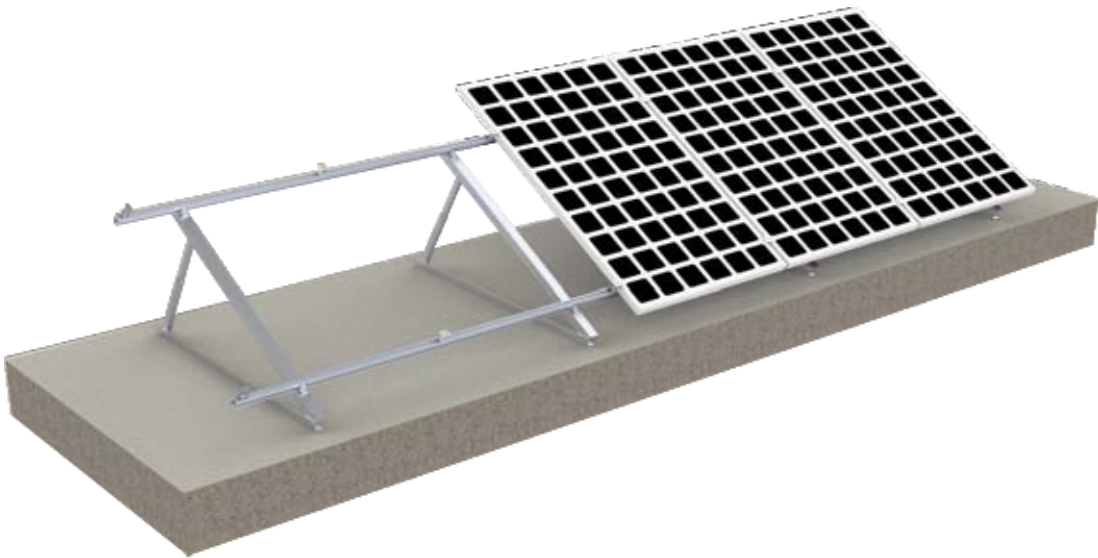


INSTALLATION

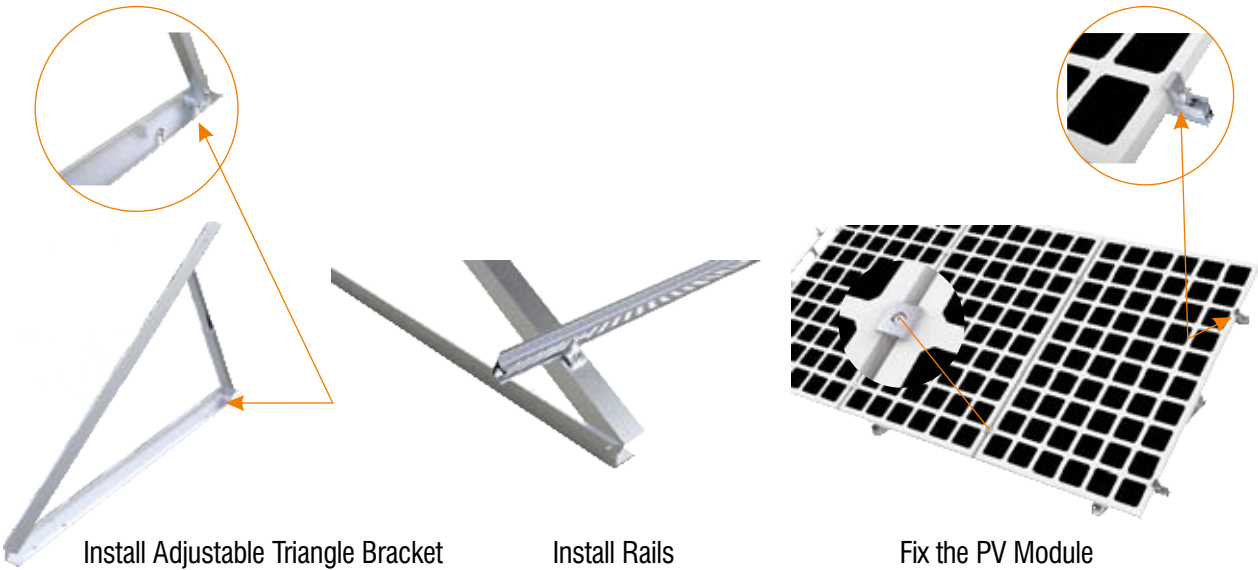




ITEM NO.	MATERIAL	SPEC.	SURFACE
EPR-SCC Stainless Cable Clip	SUS 304	for 2/4 cable	Clean
EPR-GC Grounding Clip	SUS 304	-----	Clean
EPR-GL Grounding Lug	AL6005-T5	-----	Clean
EPR-BJ Bonding Jumper	Copper Steel	160/180/200 Customized	Clean

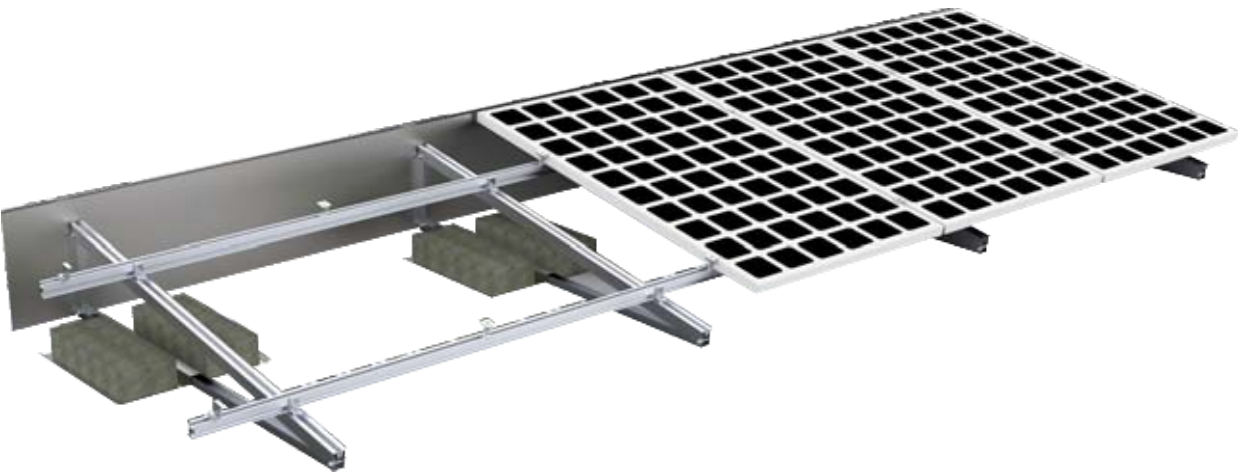


INSTALLATION



DETAILS

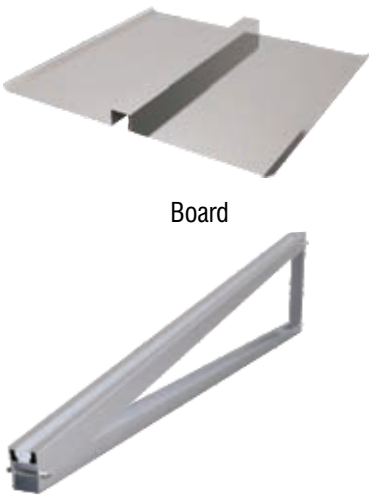




COMPONENTS



Rail 01 Rail 01 Connector Rail Clamp 03 End Clamp 01 Mid Clamp 01



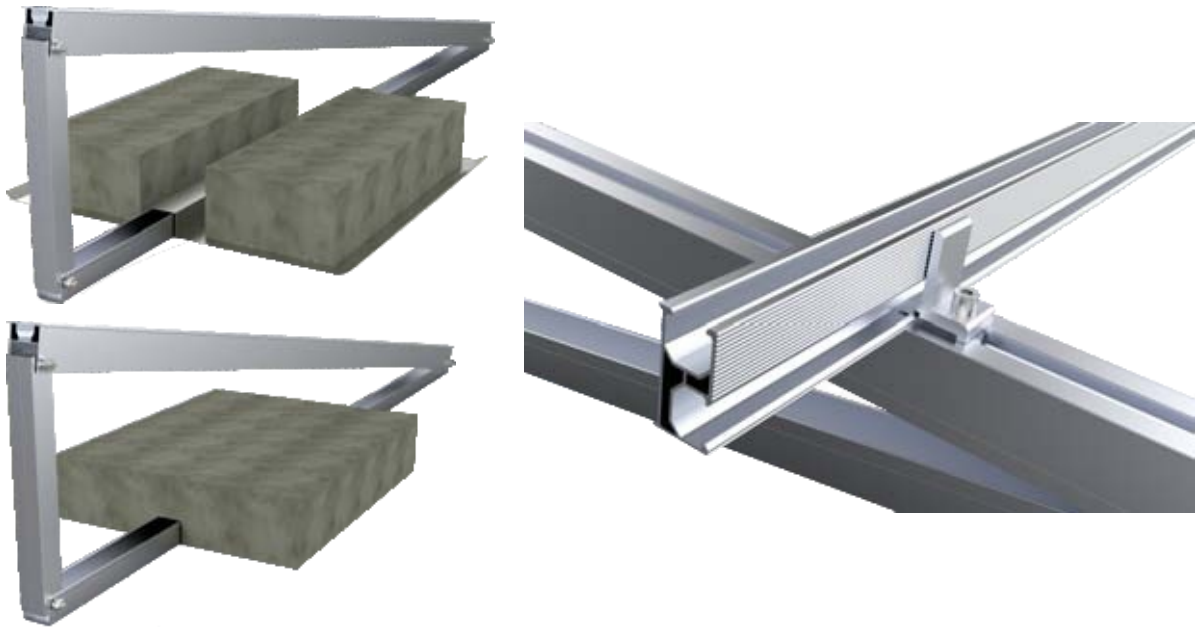
Board

Pre-assembled triangle rack

TECHNICAL INFORMATION	
INSTALL SITE	Flat roof
MAX WIND SPEED	60m/s
SNOW LOAD	1.4KN/m2
TILT ANGLE	10 - 60
BUILDING HEIGHT	20 m
MATERIAL	AL6005-T5 & SUS 304
STANDARD	Japan JIS C 8955 AS/NZS 1170

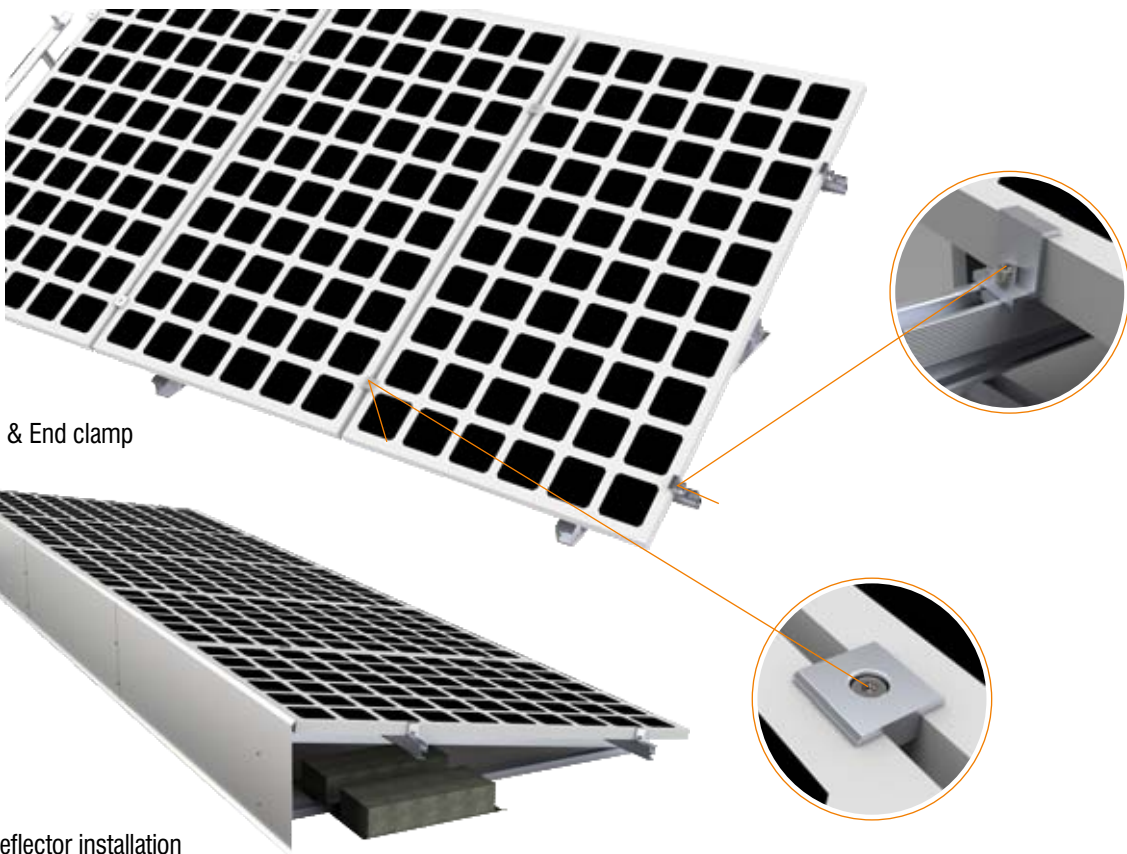
15 YEARS
WARRANTY

25 YEAR
DURATION



1 Put the concretes on the board

2 Rail Installation



3 Fix Mid & End clamp

4 Wind deflector installation

ROOF TYPE: Flat Roof
TOTAL LAYOUT: 900 Kw
MATERIAL: Aluminium 6005 - T5



ROOF TYPE: Metal Roof
TOTAL LAYOUT: 500 Kw
MATERIAL: Aluminium 6005 - T5



ROOF TYPE: Metal Roof
TOTAL LAYOUT: 10 Kw
MATERIAL: Aluminium 6005 - T5



ROOF TYPE: Tile Roof
TOTAL LAYOUT: 500 Kw
MATERIAL: Aluminium 6005 - T5

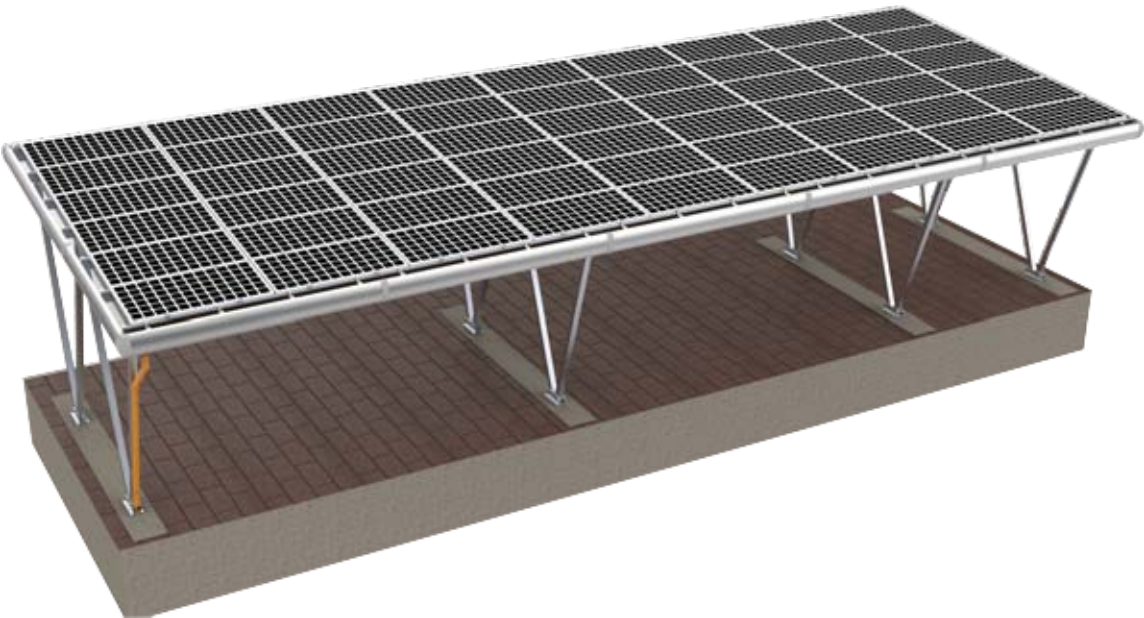
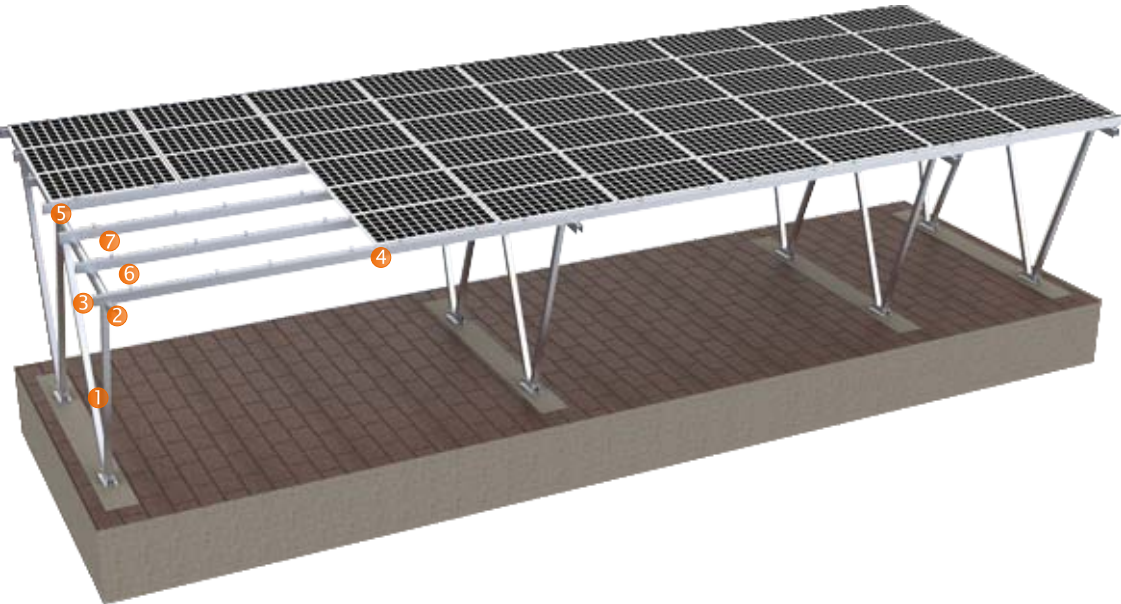


ROOF TYPE: Metal Roof
TOTAL LAYOUT: 400 Kw
MATERIAL: Aluminium 6005 - T5

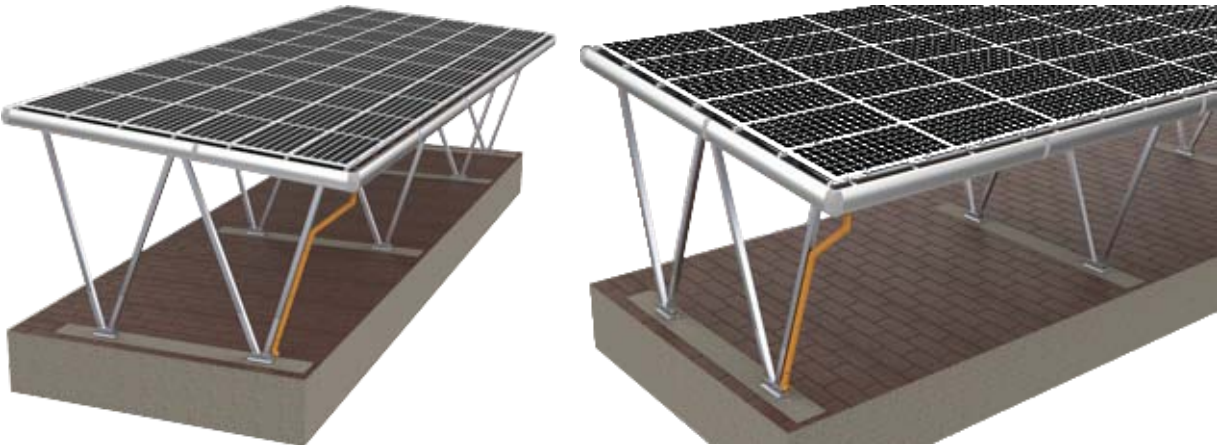


ROOF TYPE: Metal Roof
TOTAL LAYOUT: 300 Kw
MATERIAL: Aluminium 6005 - T5





COMPONENTS:



TECHNICAL INFORMATION	
TILT ANGLE	0 - 20
MAX WIND SPEED	60m/s
SNOW LOAD	1.4KN/m2
MATERIAL	AL6005-T5 & SUS304
GROUND CLEARANCE	2500 mm, accept Customized
FOUNDATION	Concrete
ARRAYMENT	Customized
WATERPROOF	No
STANDARD	Japan JIS C 8955 AS/NZS 1170

15 YEARS
WARRANTY

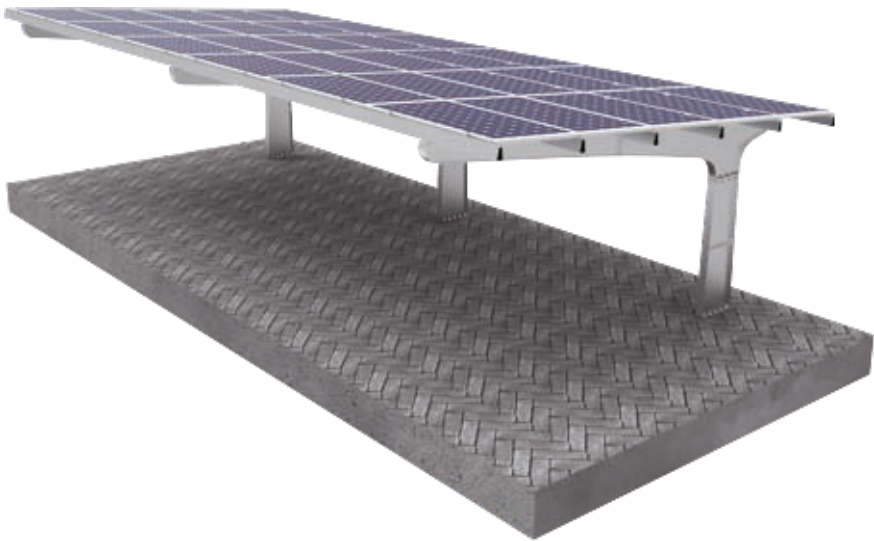
25 YEAR
DURATION

TECHNICAL INFORMATION	
TILT ANGLE	0 - 20
MAX WIND SPEED	60m/s
SNOW LOAD	1.4KN/m2
MATERIAL	AL6005-T5 & SUS304
GROUND CLEARANCE	2500 mm, accept Customized
FOUNDATION	Concrete
ARRAYMENT	Customized
WATERPROOF	Yes
STANDARD	Japan JIS C 8955 AS/NZS 1170

BENEFITS
Easy Installation:
Parts are highly pre-assembled in factory
Safety and Reliability:
Check and Test the structure strictly
Flexibility and Adjustable:
Smart design reduce the installation difficulty

15 YEARS
WARRANTY

25 YEAR
DURATION



WATERPROOF CARPORT
TOTAL LAYOUT: 10 Cars
MATERIAL: Aluminium 6005 - T5



WATERPROOF CARPORT
TOTAL LAYOUT: 6 Cars
MATERIAL: Aluminium 6005 - T5



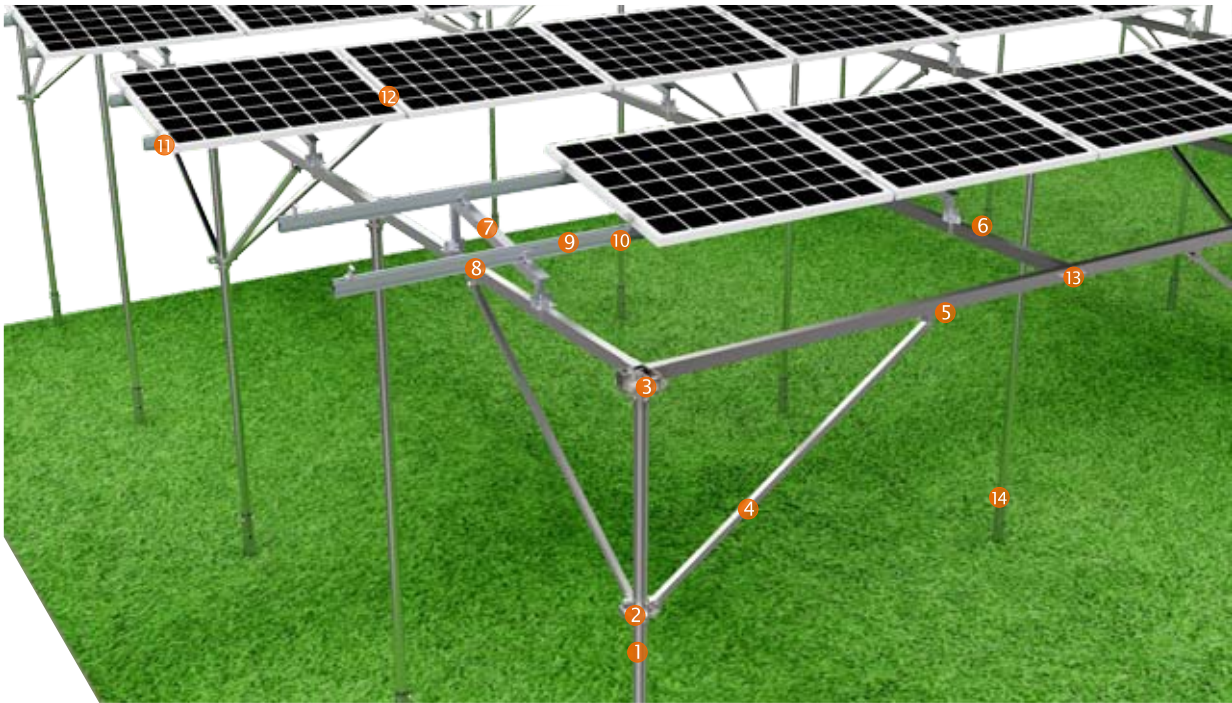
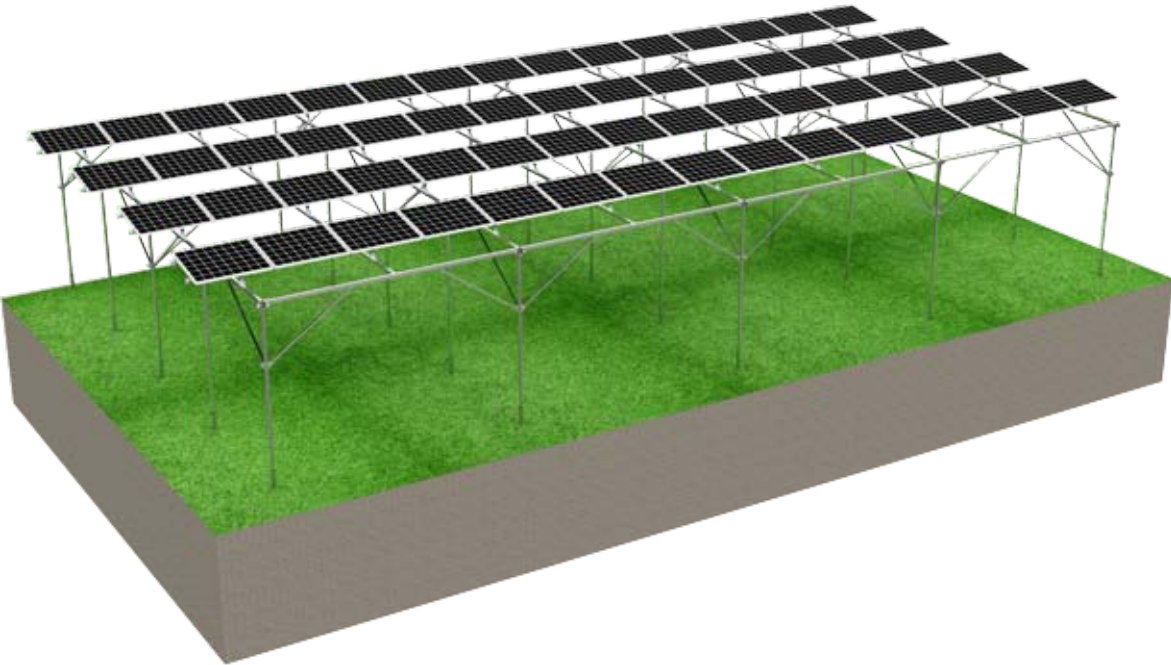
TECHNICAL INFORMATION

TILT ANGLE	0 - 20
MAX WIND SPEED	60m/s
SNOW LOAD	1.4KN/m2
MATERIAL	AL6005-T5 & SUS304
GROUND CLEARANCE	2500 mm, accept Customized
FOUNDATION	Concrete
ARRAYMENT	Customized
WATERPROOF	Yes/No
STANDARD	Japan JIS C 8955 AS/NZS 1170

BENEFITS

- Easy Installation:**
Parts are highly pre-assembled in factory
- Safety and Reliability:**
Check and Test the structure strictly
- Flexibility and Adjustable:**
Smart design reduce the installation difficulty





TECHNICAL INFORMATION

TILT ANGLE	0 - 20
MAX WIND SPEED	60m/s
SNOW LOAD	1.4KN/m2
MATERIAL	AL6005-T5 & SUS304
GROUND CLEARANCE	2500 mm, accept Customized
FOUNDATION	Concrete
ARRAYMENT	Customized
WATERPROOF	Yes/No
STANDARD	Japan JIS C 8955 AS/NZS 1170

15 YEARS
WARRANTY

25 YEAR
DURATION

BENEFITS

Easy Installation:

Parts are highly pre-assembled in factory

Excelent Adaptability:

It is made to the highest standard, safe and strong

Maximum Lifespan:

The high corrosion resistance guarantees the maximum possible lifespan and it is also completely recyclable



Solar Farmland Mounting System

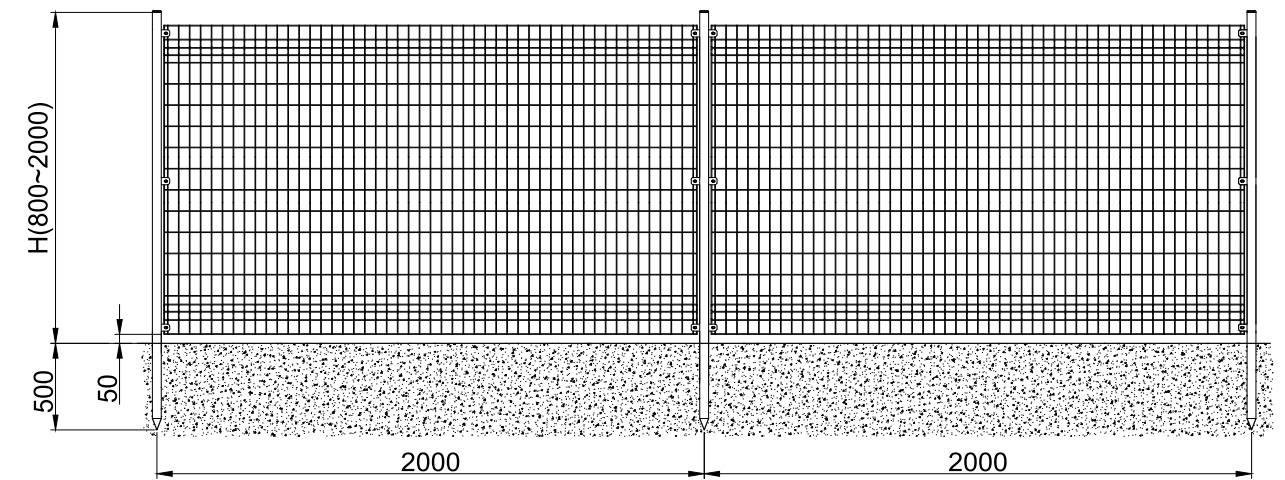
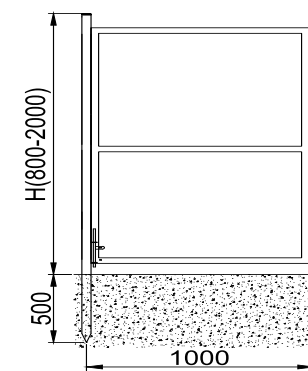
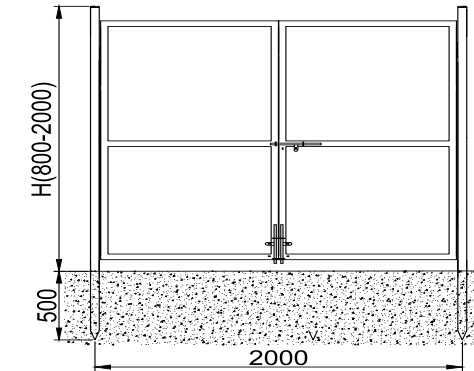
Total layout: 1 MW

Material: Hot dip galvanizing steel

**SOLAR FARMLAND MOUNTING SYSTEM**

TOTAL LAYOUT: 3 MW

MATERIAL: Aluminium 6005 - T5

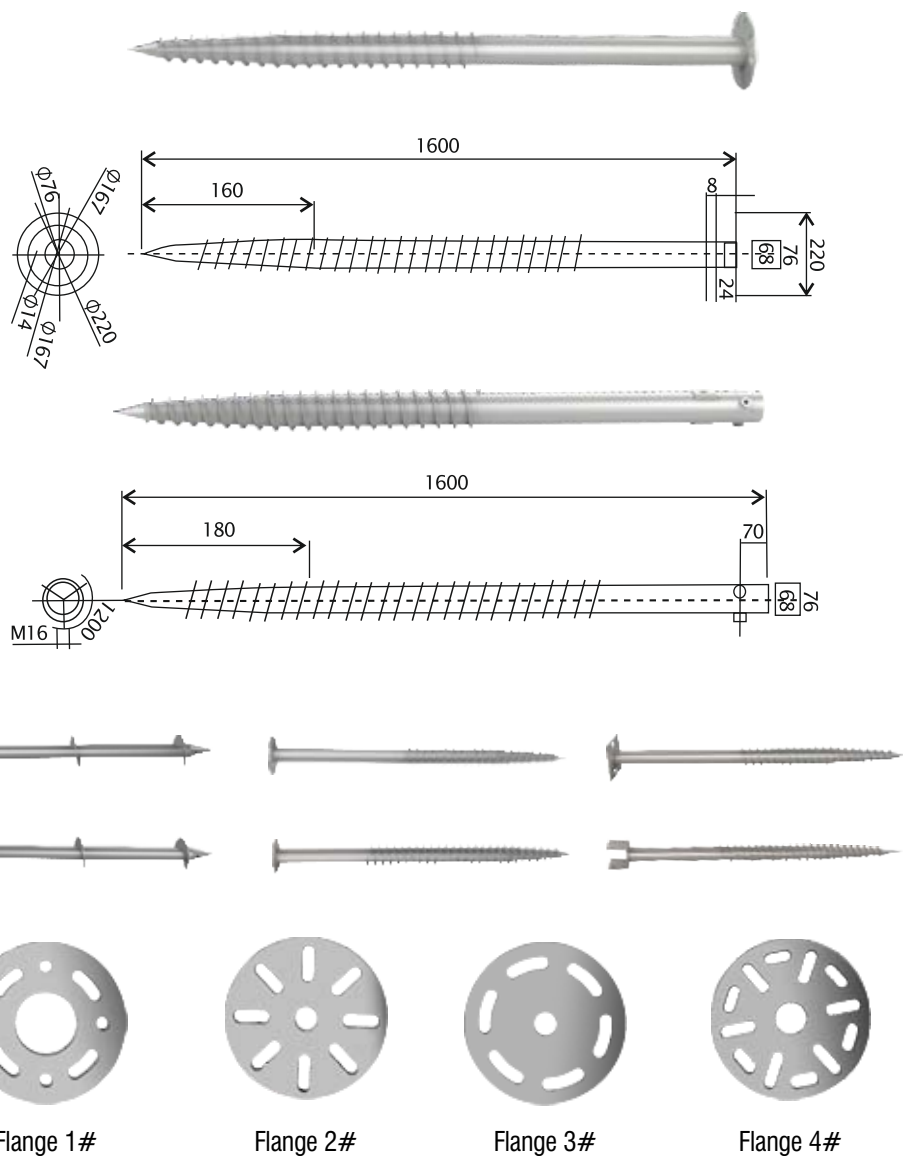
**Fence Style****Single door****Double door****Fence projects together with solar mounting system**

GROUND SCREW

Material:
Hot dip galvanized steel Q235B
Anti-corrosion & waterproof

Customization:
Customize lengths and other requirements you required

Easy Installation:
Easy installed at the exact points within few minutes



GROUND SCREW	DIA mm	THICK mm	FLANGE mm	The Distance from ground to flange is 200mm Pressure/Tension(Kn)									
				Stickness soil N value					Sand soil N value				
				3	5	10	15	25	3	5	10	15	25
EPR-F76xT3.5x1200	76	3.5	220	4.7	8.4	17.8	27.1	45.8	6.1	8.9	15.9	22.9	36.9
EPR-F76xT3.5x1400	76	3.5	220	5.9	10.6	22.4	34.1	57.7	7.7	11.2	20	28.8	46.5
EPR-F76xT3.5x1600	76	3.5	220	7.3	13.1	27.6	42.1	71.2	9.4	13.8	24.7	35.6	57.4
EPR-F76xT3.5x1800	76	3.5	220	8.3	15	31.6	48.2	81.4	10.8	15.8	28.2	40.7	65.6
EPR-F76xT3.5x2000	76	3.5	220	9.6	17.3	36.5	55.7	94.1	12.5	18.2	32.6	47.1	75.9
EPR-F76xT3.5x2200	76	3.5	220	10.1	18.1	38.3	58.5	98.8	13.1	19.2	34.3	49.4	79.6
EPR-F76xT3.5x2500	76	3.5	220	11.5	20.7	43.7	66.8	112.8	15	21.9	39.1	56.4	90.9
EPR-F76xT3.5x3000	76	3.5	220	13.9	25	52.8	80.6	136.2	18.1	26.4	47.3	68.1	109.8
EPR-F76xT3x1200	76	3	200	4.7	8.4	17.8	27.1	45.8	6.1	8.9	15.9	22.9	36.9
EPR-F76xT3x1400	76	3	200	5.9	10.6	22.4	34.1	57.7	7.7	11.2	20	28.8	46.5
EPR-F76xT3x1600	76	3	200	7.3	13.1	27.6	42.1	71.2	9.4	13.8	24.7	35.6	57.4
EPR-F76xT3x1800	76	3	200	8.3	15	31.6	48.2	81.4	10.8	15.8	28.2	40.7	65.6
EPR-F76xT3x2000	76	3	200	9.6	17.3	36.5	55.7	94.1	12.5	18.2	32.6	47.1	75.9
EPR-F76xT3x2200	76	3	200	10.1	18.1	38.3	58.5	98.8	13.1	19.2	34.3	49.4	79.6
EPR-F76xT3x2500	76	3	200	11.5	20.7	43.7	66.8	112.8	15	21.9	39.1	56.4	90.9
EPR-F76xT3x2500	76	3	200	13.9	25	52.8	80.6	136.2	18.1	26.4	47.3	68.1	109.8

INSTALLATION





CUTTING



TAPERING



HOLE



AUTOMATIC WELDING



AUTOMATIC WELDING



HOT DIP GALVANIZED



PACKING

SOLAR CLAMPS
Material: Aluminium
Surface: Clean Anodized

		SPECIFICATION: ADJUSTABLE MID CLAMP 35 mm 40 mm 45 mm 46 mm 50 mm
		SPECIFICATION: ADJUSTABLE END CLAMP 35 mm 40 mm 45 mm 46 mm 50 mm
		SPECIFICATION: MID CLAMP 35 mm 40 mm 45 mm 46 mm 50 mm
		SPECIFICATION: END CLAMP 35 mm 40 mm 45 mm 46 mm 50 mm

SOLAR CLAMPS

Material: Aluminium

Surface: Clean Anodized



SPECIFICATION: MID CLAMP

35 mm	40 mm	45 mm	46 mm	50 mm
-------	-------	-------	-------	-------



SPECIFICATION: END CLAMP

35 mm	40 mm	45 mm	46 mm	50 mm
-------	-------	-------	-------	-------



SPECIFICATION: THIN FILM MID CLAMP

Thickness: 4-8 mm



SPECIFICATION: THIN FILM END CLAMP

Thickness: 4-8 mm